

Coming Soon - 09/11/2025



657 Woodside Dr, Milford Vlg, MI 48381

- » Beds: 2 | Baths: 2 Full, 1 Half
- » MLS #: 20251034673
- » Condominium | 1,350 ft²
- » More Info: [657WoodsideDr.IsForSale.com](https://www.realestate.com/657WoodsideDr.IsForSale.com)



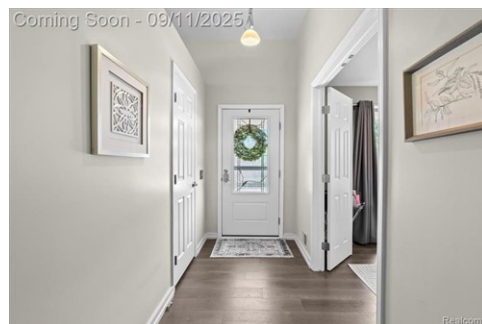
Heidi Norris
(248) 320-5076
heidi@thebrandmi.com

BRAND
REAL ESTATE

The BRAND Real Estate
5400 Gateway Center Ste B
Mundy Twp, MI 48507
(810) 356-9400

\$ 360,000

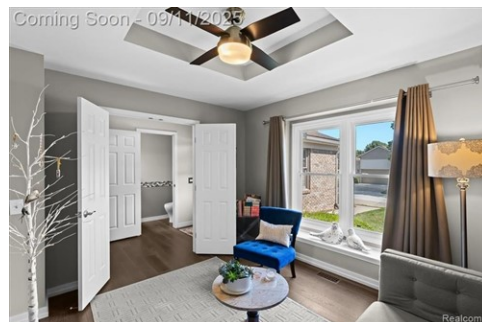
Coming Soon - 09/11/2025



Coming Soon - 09/11/2025



Coming Soon - 09/11/2025



Coming Soon - 09/11/2025



Remarks

A rare opportunity awaits with this spectacular open-floor-plan ranch condo in the prestigious, highly sought-after Summit Ridge community. Perfectly located in the heart of the Village of Milford, you'll be within walking distance to downtown shops, restaurants, concerts, and all the charm this vibrant village has to offer. From the moment you step inside, you'll be welcomed by soaring ceilings, a bright open layout, and contemporary vinyl flooring throughout. The spacious great room is filled with natural light from the wall of windows, seamlessly connecting to the dining area and a sleek, modern kitchen with updated stainless appliances, granite counters, and freshly painted cabinetry. The glamorous primary suite is a true retreat, featuring vaulted ceilings, a private deck, two large closets, and a spa-like bath with dual vanities and a walk-in shower. The finished lower level expands your living space with a large family room, two additional bedrooms, a full bath, and abundant storage perfect for guests or multi-generational living. This end unit offers over 2,600 finished square feet of living space and is loaded with recent updates: new furnace, AC, hot water heater, windows, roof, siding, garage door opener with keypad, water softener, and kitchen appliances. Additional features include a

